

CARLING

FRANKENMUTH NEWS



PUBLISHED IN THE INTEREST
OF EMPLOYEES AT THE
FRANKENMUTH, MICHIGAN
PLANT OF THE CARLING
BREWING COMPANY

Volume 3, No. 33

January, 1962

This'll Make Competition Worry!

New Addition In Production By March 1

March 1 is the target for the beginning of production in our new addition, since mid-December bustling with the activity which goes with receiving and installing new equipment.

Considering that ground for our \$5.5 million plant expansion program was broken a scant nine months ago, we're witnessing a fine spectacle of speed and efficiency.

Our expansion job has proceeded under supervision of Edwin F. (Ed) Jarman, Carling construction field superintendent. He also worked on the new Baltimore plant project and in Atlanta, Ga., and Natick, Mass., plant construction jobs.

Since Dec. 5, bottling fillers, pasteurizers and labelers have arrived and now are installed. Work will proceed apace on installation of de-palletizers, palletizers, conveyors, case flap openers, soakers and case cleaners.

Work will begin soon to double the size of our new warehouse, now 150x250 feet in size for total storage of about 300,000 cases.

Here's how production will move in the new addition in step-by-step fashion:

Starting from the dock - which really consists of 10 individual docks - cases will be unloaded by lift trucks to a de-palletizer, which takes pallets of empty cases and literally "unscrambles" them, layer by layer.

By overhead conveyor, these cases are whisked to the bottling line, run through a case flap opener, and from there to a bottle unloader which feeds bottles onto a special table. Here they are fed into a soaker-rinser. Then, by conveyor, they travel through an inspection light before passing into a high-speed filling machine, then through a pasteurization process.

After pasteurization, they pass through fill-tec automatic inspection for a quantity, or fill, check. The next step takes bottles through labeling and into an automatic packing machine, after which cases go by conveyor to palletizers which set cases onto pallets, which then are loaded by lift truck into distributor transports, or warehouse storage.

(Continued on page 2)



WAY, WAY UP! -- Here's a view of the football field expanse of our new warehouse, soon to be doubled in size in another phase of our \$5.5 million expansion program. It now has storage capacity for 200,000 empty cases.

New Addition

(Continued from page 1)

Empty cases, after leaving unloaders, are moved by conveyor into the basement where cases are cleaned and sprayed with germicide. After cleaned cases are checked for condition, they are directed by conveyor to the packing operation.

Some of the "extras" on the bottling line include caustic cleaning units which remove labels from the soaker as it operates. The line also is equipped with a centralized conveyor soap lubricating system.

Salvage cases are moved to the baler by huge, wide belts running 300 feet overhead throughout the plant, actually giving about one day's accumulation of waste on the belt.

The new high-speed bottling line will give our plant 600 bottles of production a minute in an automatic marvel of speed and precision!

Our Safety Record Begins 7th Year

The close of 1961 marked our sixth consecutive calendar year without a lost-time injury accident for a total of 2,460,256 1/4 man-hours.

We added four awards to the glistening array on our trophy display. They are the United States Brewers Association's All Personnel and Safest Plant awards, and the National Safety Council's First Plant Award and Award of Merit. Requirements for the latter is one million man-hours worked since the last lost-time injury.

Our plant also led other Carling plants in our company's inter-plant safety contest. The Atlanta plant also completed the past calendar year without a lost-time injury, but had fewer man-hours worked.

Atlanta, however, made an excellent safety showing. The accident frequency rate dropped from 11.3 in 1960 to 0 in 1961.

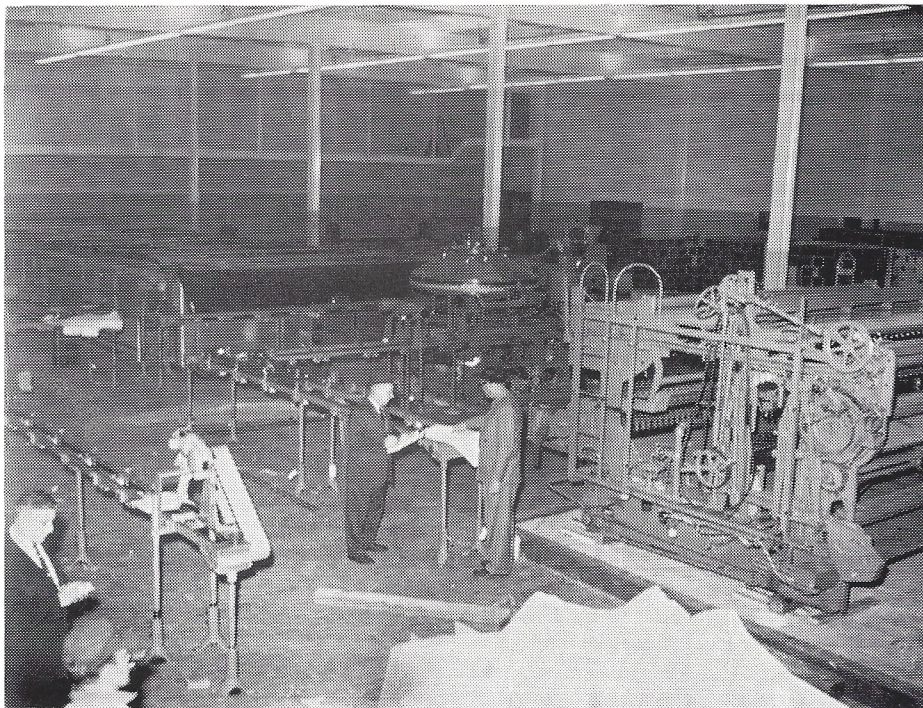
CARLING BREWING COMPANY INTER-PLANT SAFETY

January 1 - December 31, 1961

	MW	LTI	FR
Cleveland	1,968,169	7	3.56
Belleville	838,938	2	2.38
Natick	629,947	16	25.40
Frankenmuth	451,566	0	0
Atlanta	382,967	0	0
Tacoma	522,988	7	13.38
Baltimore	265,483	8	30.13
All Plants - 1961	5,060,058	40	13.56
All Plants - 1960	5,014,522	68	30.13
MW - Manhours Worked			
LTI - Lost Time Injuries			
FR - Frequency Rate			

Joan Rupprecht Cited As Scholar

Joan Rupprecht, daughter of Clarence Rupprecht of Quality Control, is distinguishing herself as a freshman student at Michigan State University and thus justifying the Carling Quarter Century Club's choice of Joan to receive our club's first scholarship. During her first term of work, she attained an all-A record, winning official commendation of Edward A. Carlin, dean of MSU.



WHOPPER SOAKER -- Here's the new 60-ton bottle line soaker in our addition. Viewing the behemoth are, left to right, Jay S. Hance, service engineer for the George J. Meyer Mfg. Co., Cudahy, Wis., and Ed Jarman, Carling construction field superintendent supervising our expansion.

Off-Duty Safety Drive Starts

An off-the-job safety program for Saginaw County has been organized by the Greater Saginaw Safety Council's Industrial Division and Herb Naegele, our plant's personnel and safety director, is one of its enthusiastic supporters.

Herb was one of 25 Saginaw Valley personnel and safety directors who attended an organization meeting Jan. 18 at the Chevrolet Transmission plant in Saginaw.

They agreed that each off-duty disabling injury resulting in inability to work one full scheduled day, or non-scheduled day or more shall be reported. Fatal injuries will be included.

Industrial personnel departments will send all off-the-job injury reports to the Greater Saginaw Safety Council. Injuries will be described.

Through these reports, committeemen will attempt to learn where and how Saginaw County workers are being injured, so accident prevention programs may be planned accordingly.

Examples: Transportation - auto or truck (driver, passenger, pedestrian); public transportation - (bus, rail, boat, airplane); public - (sports, falls, fights, slips, assaults, animals, insects, plants, firearms, fires, explosions, electricity, lifting; employee's homes, grounds, adjoining sidewalks and streets (slips, falls, lifting, power lawnmower, animals, insects, machines, tools).

More than 75 per cent of all Saginaw Valley workers will be included in the new off-the-job safety venture.

At the opening session at Chevrolet Transmission, committee members considered these facts:

Accidents are responsible for 93,000 deaths annually in the U.S.

An additional 9 million persons suffer disabling, non-fatal injuries each year at a total cost of more than \$10 billion. More than 75 per cent of these occur while the victim is away from the job.

Many of the costs of off-duty accidents are as great to the company as if they had happened while the employee was on the job, and his suffering and mental anguish, and that of his family, is the same.

Nearly as many lives are lost annually in home accidents -- supposedly a refuge from danger -- as were lost in battle during the three years of the Korean War. More than 20 per cent of home-accident victims are industrial employees.

The Saginaw County Off-The-Job Accident Prevention committee is headed by Jack Gerwin, Saginaw Steering Gear Division safety director. Other members are Jack Smith, Michigan Bell Telephone Co., safety director; Kenneth Melville, Greater Saginaw Safety Council executive secretary; Marion Peacock, City of Saginaw public works department, and John Sommer, Chevrolet Transmission plant safety director.

New Brews

Mr. and Mrs. Norbert Matzke, Bottling Department, have a new son, Brent Lloyd. He was born Dec. 8 and weighed 6 pounds, 8 ounces.

Mr. and Mrs. Robert Matzke, Cellar Department, also have a new son, Eric Maurice. He was born Dec. 28 and weighed 8 pounds, 7 ounces.

Red Cap Ale Market Hit In New Form

Our new Red Cap Ale, first consignment of which was shipped from here Jan. 2, is proving a distinct market hit.

It features "true Canadian flavor" and is being offered in three new packages - a distinctive 12-ounce can and an 11½ ounce "select" green bottle, characteristic of choice, imported malt beverages, and a 32-ounce returnable bottle.

Striking new labels for Red Cap ale were designed by Raymond Loewy, internationally famous in his field.

"Our new Red Cap ale", says Plant Manager Les Freidinger, "is a fine product in the best tradition of Carling beer and ale. We expect great things of it from the quality-conscious public."

He said the new light-flavored and full-bodied Red Cap ale is the first of its kind ever brewed in the United States.

Over the years, the brewing process for Red Cap ale has been changed periodically to satisfy the public's tastes.

Thomas Carling introduced his ale in 1840 in Canada. But it was not until 1927 that an emblem was registered designating the product as Red Cap Special Stock Ale.

The original emblem pictured a mounted jockey wearing a red cap. It was part of a label designed by Charles Burns, plant manager of the London, Ont., brewery, and an avid horse-racing fan.

The label designed by Burns later was adapted to feature the head of a huntsman wearing the red cap. This has been the official symbol of Red Cap ale since 1934.

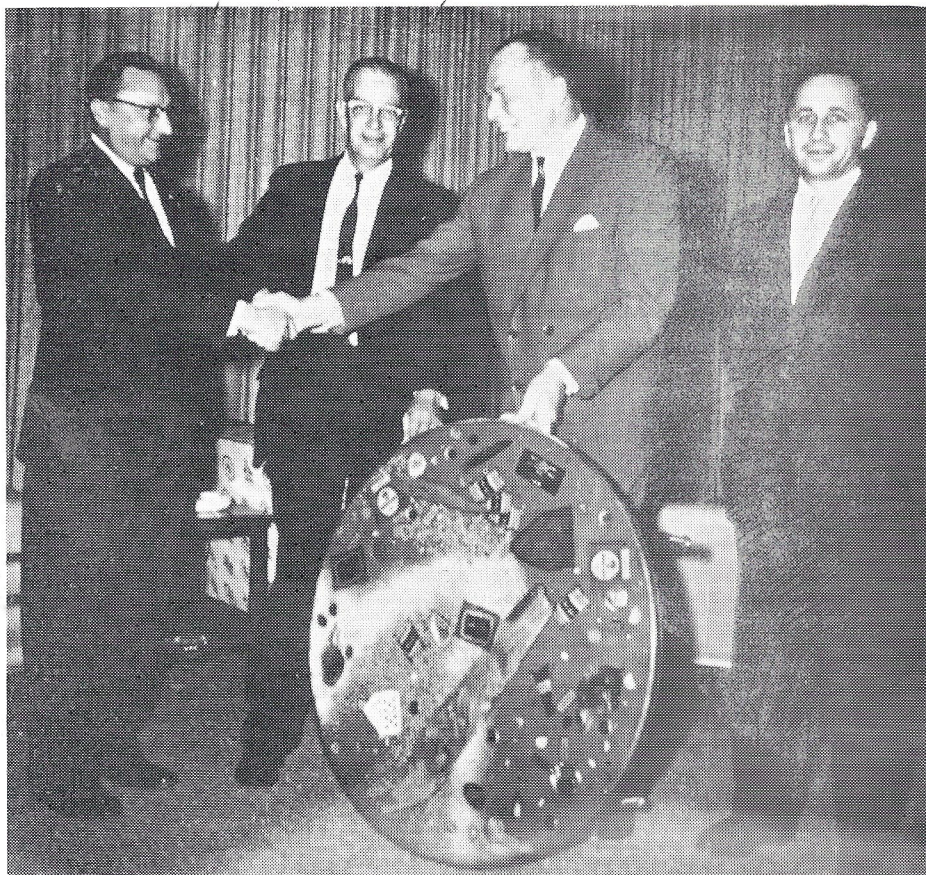
Prosit!

Twenty-one of our friends and fellow Carlingites here observe birthday anniversaries in February.

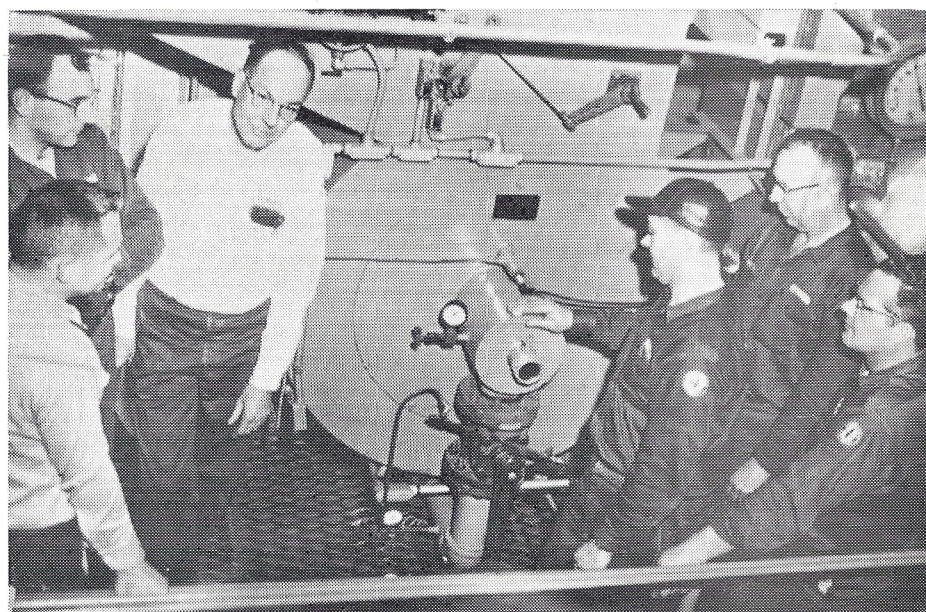
Here's the list, for "happy birthday" reference: Feb. 1 - Alice Loesel; 2nd - Glenn Auernhamer; 3rd - Ralph Eischer; 5th - Wallace Mayer; 6th - Clifford Mossner; 10th - Bernard Todd; 11th - Floyd Matzke; 12th - Alfred Kienitz, Martin Eischer and Harold Maurer; 14th - Lois Krafft; 16th - William Rohn, Jr.; 17th - Charles Nestell; 18th - Charles Baldwin; 19th - Anton Kern; 23rd - Ottomar Rupprecht, Theodore Wescoat, Jr., and Reinhard Ill; 25th - Sidney Burke; 27th - Aloysius Quaderer; 29th - Harold Reif.

The Carling Frankenmuth News

Associate Editor, Herbert Naegele	
George Schmunk	Brewhouse
Willie Brechtelsbauer	Engineering
Ottomar Rupprecht	Bottle House
Bernard Todd	Bottle House
Richard Nuechterlein	Office
Harold Matzke	Cellars
Fred Bickel	Powerhouse
Harold Eischer	Bottle House
Alfred Matzke	Cellars
Virginia Tremonti	Office
Alfred Buzzard	Bottle House



"TYPICALLY FRANKENMUTH", SAYS MR. DOWIE -- Three members of our plant's Quarter Century Club motored to Cleveland recently on a special mission -- to present a handsome coffee table to Carling President I. R. Dowie. The table's glossy surface was imprinted with Carling products' insignia, including bottle caps and fragments of bottles and cans--all finished flush to the table surface. "This is typically Frankenmuth," beamed the grateful Carling president, shown shaking hands with Clarence Rupprecht, Quality Control, president of our Quarter Century Club. Others, left to right, are E. Jack Price, brewmaster, and George Schmunk, president of Local Union 212.



BOILER CONVERSION TEST -- This group watched with satisfaction the testing of our new gas-fired boiler installation. Reading clockwise, left to right, are Leo E. Rousseau, assistant plant engineer; Willis Veitengruber; Ernie Mell, plant electrician, and Arnold Scharrer, Ellsworth Doud and Willie Brechtelsbauer, all of the Engineering Department. See story on page 4.



CHRISTMAS SPIRIT - Members of Local Union 212 give Christmas baskets laden with hams, turkeys, groceries, cakes and candy to union brothers who have been incapacitated by lengthy illness. Recipients were Harold Shook, Harold Stockwell and the late Albert Kaul, all of the Bottling Department, and Ernie Gauderer of the Brewing Department. Shown here about to deliver the baskets are Harold Jekel of the Bottling Department and Harold Matzke, Cellular Department.

Bock Beer Dates

The Michigan Bock dates have now been announced and we are passing these on to you for your guidance and information:

1. Bock Beer shall not be offered for sale to Michigan wholesale distributors before Monday, February 12, 1962.
2. Wholesale distributors and breweries shall not offer Bock Beer for sale to retailers before Monday, February 19, 1962.
3. Sales of Bock Beer shall not be made to consumers before Monday, February 26, 1962.
4. All sales of Bock Beer shall be discontinued on or before Wednesday, October 31, 1962.

The State of Indiana dates have been issued by the Indiana Alcoholic Beverage Commission and are as follows: Brewer to wholesaler, Feb. 26, 1962. Wholesaler to retailer, Mar. 5, 1962. Retailer to consumer, March 10, 1962.

Safety Slogan

"There Is A Safe Way; Do It That Way!"

So advises our January safety slogan, an appropriate one to herald the new year.

Winners in the December safety slogan contest received gift certificates from Oscar Rau Electric. The list: Lois Krafft, Donald Matthews, Ludwig Riess, Walter Kowalski, Jr., Mrs. Eugene Kern, Ernest Mell, Howard Stockmeyer, Mrs. Frank Beach, Howard Buzzard, Mrs. John Lehner, Mrs. Virgil Kridler and Alfred Bielert.

Orlando To Host 'Carling Open'

ORLANDO, FLA. - The tenth annual \$35,000 Carling Open Golf Tournament, one of the nation's top professional golf events, has been scheduled for the Rio Pinar Country Club here Nov. 22-23, C. E. Landreth, Carling Southeast Regional Vice-President has announced.

Proceeds from the Carling Open, first major Professional Golfers Association tournament scheduled in Orlando since 1947, will go to the Orange Memorial Hospital, Landreth said.

In addition to the main purse of \$35,000, the Carling Open features a one-day Pro-Am event with a purse of \$3,500 and a special purse of \$1,500 for Florida gold professionals.

The Carling Open, together with the National Open and the PGA championship, is played in a different section of the country each year. It was last played in the South in 1958 at Atlanta's Cherokee Town and Country Club.

Selection of Rio Pinar Country Club for the Carling Open came only after a thorough appraisal of many golf courses, tournament officials said.

Rio Pinar was the site of five rounds in the World's Championship television matches in 1959, which saw several of the nation's top golfers, including Sam Snead, beat Rio's par 72 with a 71, the best round scored. Designer of Rio Pinar was Mark MacHannah, nationally known golf architect.

A unique feature of the Carling Open is the winner's bonus plan, originated in 1957. A repeat winner of the tournament receives a \$5,000 bonus, while a three-time champion is paid a \$10,000 bonus, in addition to first prize money.

Julius Boros and Dow Finsterwald each have won the Carling Open twice, and next year will be shooting for a third Carling championship and the additional \$10,000. One-time winners of the Carling Open are Cary Middlecoff, Doug Ford, Paul Harney, Ernie Vossler and Gay Brewer, Jr., 1961 winner, all eligible for the \$5,000 bonus.

With the tournament largely financed and entirely underwritten by the Carling Brewing Company, proceeds from each

Boiler Converted, Gas Takes Over

Our plant's conversion from a coal-fired boiler to use of gas last month went without a hitch, amid plaudits of the community for ending black smoke and occasional soot which came from the chimney.

The converted boiler is capable of producing 46,000 pounds of steam an hour. The boiler's fuel requirement is 64,700 cubic feet of gas an hour at a constant pressure of 10 pounds per square inch gauge.

Stating it graphically, this is enough gas to heat 647 average-sized homes during the winter months!

Consumers Power Co. installed a mile of four-inch main from M-38 to the brewery, and 259 feet of four-inch service line, maintained at 50 pounds pressure and reduced to 12 pounds at our new gas metering house.

The boiler conversion job was done by Wickes Boiler Co. of Saginaw.

year's tournament are turned over to a leading civic institution in cities where the tournament is held. The Auxiliary of Orange Memorial Hospital will serve with the club, as co-hosts of the 1962 Carling Open. Tournament proceeds will go to the Auxiliary's project of equipping the new pediatrics ward of the hospital.

As a regular co-sponsored PGA tournament, the Carling Open will have a contestant field of 150. In addition to the nation's top touring professionals, the tournament will be open to Florida professionals and to Central Florida amateurs with handicaps of two or less. If the event applications exceed 150 a qualifying round for other than exempt players will be played on Monday, November 19, 1962.

The one-day Pro-Amateur event is scheduled for Wednesday, November 21, with the fifty top professionals entered in the tournament paired with 150 of Orlando's civic, business and professional leaders.

Cupid Not Idle

Although he isn't listed on the payroll, Dan Cupid "works" here, too, as attested by recent marriages of four Carling Frankenthuth employees.

The newlyweds are Mr. and Mrs. Frederick Hauck, Jr., and Mr. and Mrs. Herman O. Matzke.

Before her marriage, Mrs. Hauck was Edna Pickelmann, daughter of Mr. and Mrs. Raymond Pickelmann, and an office employee in our plant. Her husband, Fred, works in our Bottling Department.

Mrs. Matzke, also one of our office employees, is the former Margaret M. Van Wormer, daughter of Mr. and Mrs. Theodore Van Wormer. Her husband, Herman, was employed in our Bottling Department, now is a private in the Army and stationed at Fort Knox, Kentucky.

Sympathy

Our plant was saddened by the death Jan. 5 of Albert H. Kaul, 42, of the Bottling Department after lengthy illness. He had been a Carling employee since June 20, 1952. He leaves his wife, Luella, a daughter and four sons.

Al's Proud Dad

Al Matzke, our plant's assistant master brewer, has good reason to be proud of his son, John A. Matzke, making his mark this year at Dartmouth both as a scholar and athlete.

John, one of the 38 numeral winners for the Big Green yearlings last fall, was switched from his customary fullback position to tackle.

Coach Matzke, Dartmouth's football mentor, had this to say about John: "Tackle is one sport where we really need help next year. Matzke has good potential. His only problem is that he hasn't played enough tackle since being switched from fullback."

Young Matzke, a standout scholar as well as athlete in his "prep" career at Saginaw's Michigan Lutheran Seminary, ranked in the top quarter of his graduation class there.

NEW TRUSTEE

Glenn Harris of our Bottling Department recently was elected to a three-year term as trustee of Union Local 212.